

# PUFF-JACKET

a method for remaking a suit jacket and matching pants into a new combo

a >SELF\_PASSAGE< method

© copyleft by >wronsov< Oct 2007



1. take an old suit jacket.



2. take a pair of matching pants, cut off legs just under the waist line.



3. unstitch side pockets and cut off arms just above the shoulder seam.



4. take out the shoulder padding.



5. put the legs as sleeves, start pinning at top and bottom seams of the armhole.



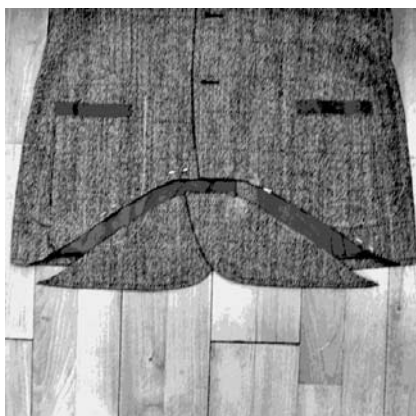
6. make seam straight at front., let a part of the pocket still be seen.



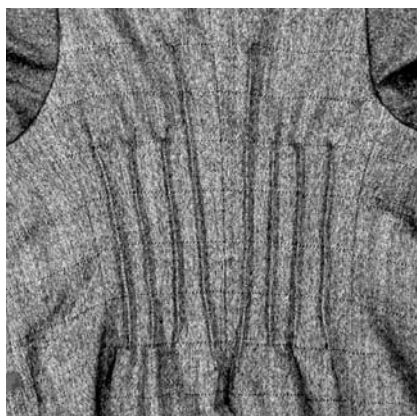
7. pull together excess fabric into pleats close on top of the shoulder. attach the new sleeves.



8. make the sleeves slimmer.



9. cut out a part of the front.



10. make channels in the back to create a slim fit. move front buttons to fine adjust.



11. your new silhouette - your new self.